

Quick start guide



Thank you for purchasing a ^{X30} Maytronics Robotic Pool Cleaner.

The Robotic Pool Cleaners by Maytronics deliver advanced cleaning technologies, long lasting performance and easy maintenance. You and your family will be free to enjoy swimming with full confidence that your pool is completely clean.

www.maytronics.com

Cautions & Warnings

- Use the originally supplied power supply only.
- Do not use an extension cable in any case whatsoever.
- Ensure the electrical outlet is protected by a ground fault interrupter (GFI) or an earth leakage interrupter.
- Keep the power supply out of standing water.
- Do not enter the pool while the Pool Cleaner is working.
- Unplug the power supply before servicing.
- Do not use the cable to take the pool cleaner out of the water.
- Use the Pool Cleaner in the following water conditions only: Chlorine Max 4 ppm; pH 7.0 - 7.8; Temperature 6 -34°C (43-93°F); NaCl Maximum = 5000 ppm.

Digital Power Supply
Input: 220-240 AC Volts
50-60 Hertz
120 Watt
Output: <30 VDC
IP 54

Specifications:
Motor protection: IP 68
Minimum depth: 0.80m/2.6ft
Maximum depth: 5m/16.4ft

Helpful hints

- When working, the Power Supply should be placed in the shade.
- If the Dolphin is fitted with combined or wonder brushes, gently squeeze the brushes until they are soaked with water.
- Release minimal required floating cable length to ensure proper pool coverage. Leave excess cable rolled outside the pool.
- After each cleaning cycle wash the filters or cartridge. Clogged filters reduce scanning and cleaning efficiency.
- To remove the kinks stretch the cable out completely and let it sit for at least a day in the sun.
- Store the pool cleaner in a shady place on its Caddy, if not on a caddy, place the pool cleaner upside down.



For online product warranty registration:
registration.maytronics.com

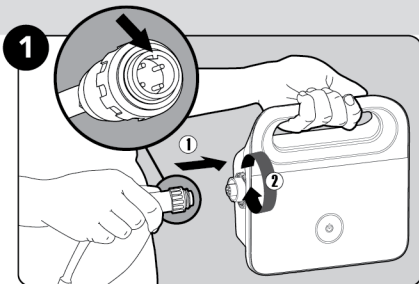


For a detailed manual (including videos):
manuals.maytronics.com/en/ 99996201-AU

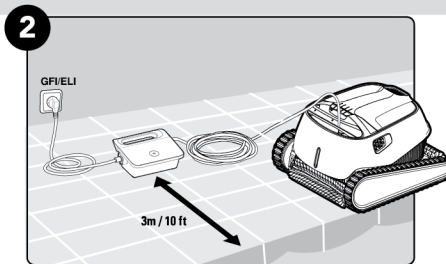


Robot operation

Set Up

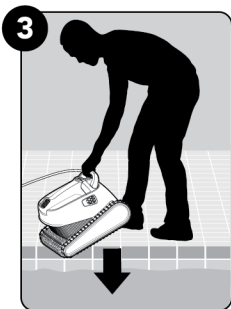


Attach the floating cable to the power supply.



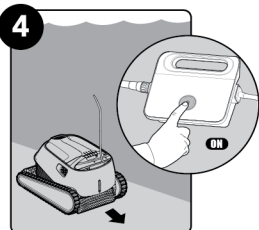
Position the power supply at least 3m/10ft away from the edge of the pool.

Into the pool



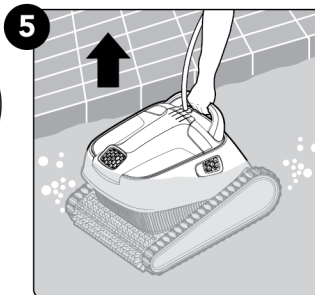
Put the Pool Cleaner into the pool. Release the Pool Cleaner and let it sink to the floor of the pool. Make sure that the floating cable is free of any obstructions.

Operation



Turn the power supply ON. The Pool Cleaner will now operate until it has reached the end of the cleaning cycle.

Out of the pool

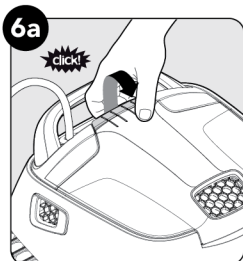


6 Cleaning the filter

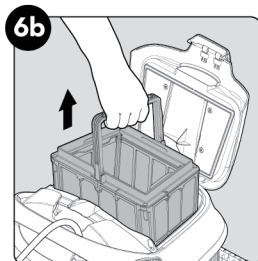
It is highly recommended to clean the filter basket after each cleaning cycle.

Note: Don't let the filter cartridges dry out before cleaning.

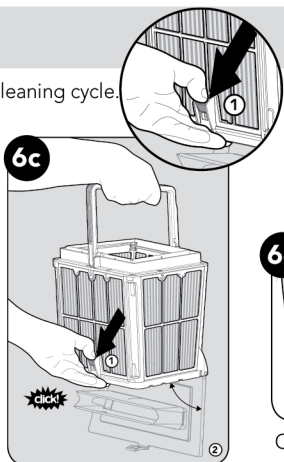
⚠ Unplug the power supply before servicing



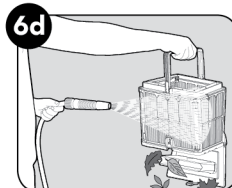
Open the filter cover.



Lift up the basket.



Open the latch to release the bottom lid in order to remove the debris.



Clean the filter basket with a hose.

7 Storage

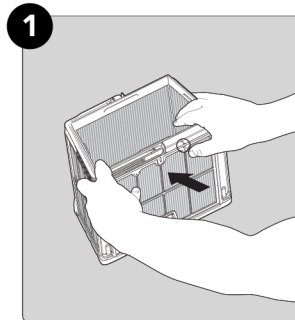
Coil the cable and store in a cool, dry place on the Caddy.

Do NOT store the robot where it will be exposed to direct sunlight, excessive heat or to frost.

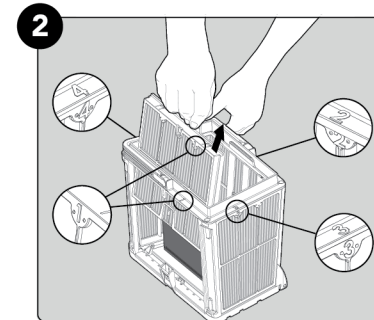
Maintenance

Periodic filter cleaning

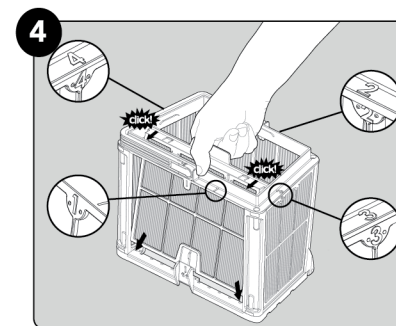
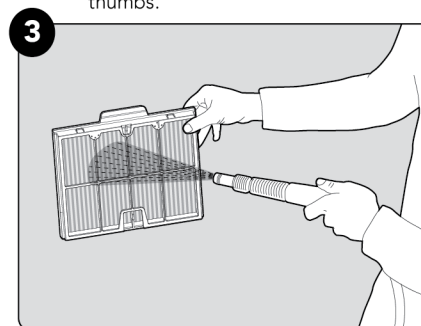
Dismantle the 4 ultra-fine filter panels of the outer basket according to the following steps:



Dismantle the panels, starting with pressing on panel no.1 using your thumbs.



Continue to dismantle the panels in the order of their numbers: no.2--> no.3--> no. 4.

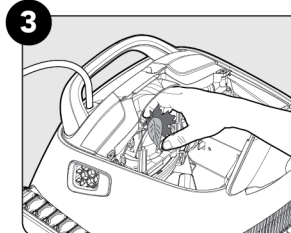
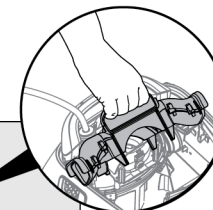
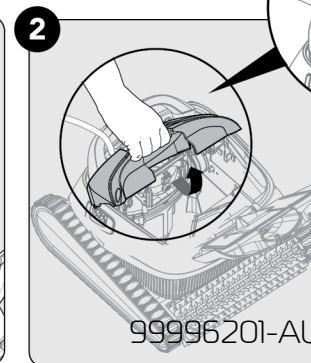
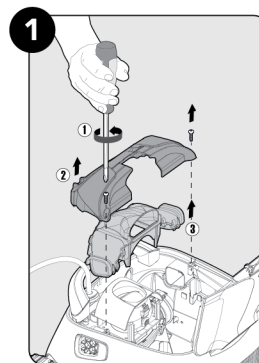


Cleaning the impeller

If you notice debris trapped in the impeller:

⚠ Unplug the power supply before servicing

Clean the debris trapped in the impeller opening, according to the following steps:



99996201-AU